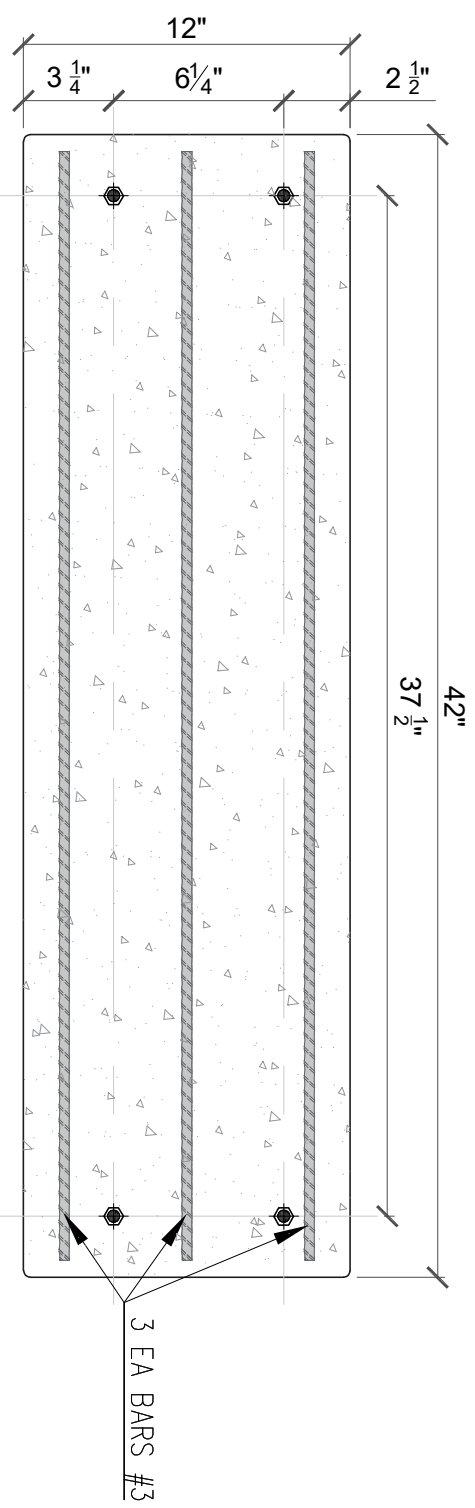
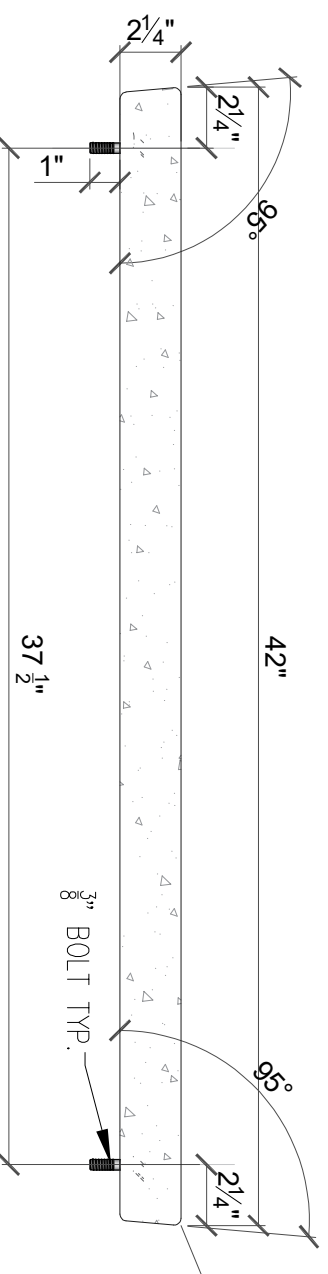


42" PRECAST TREAD-BROOM FINISH
TOP OF TREAD

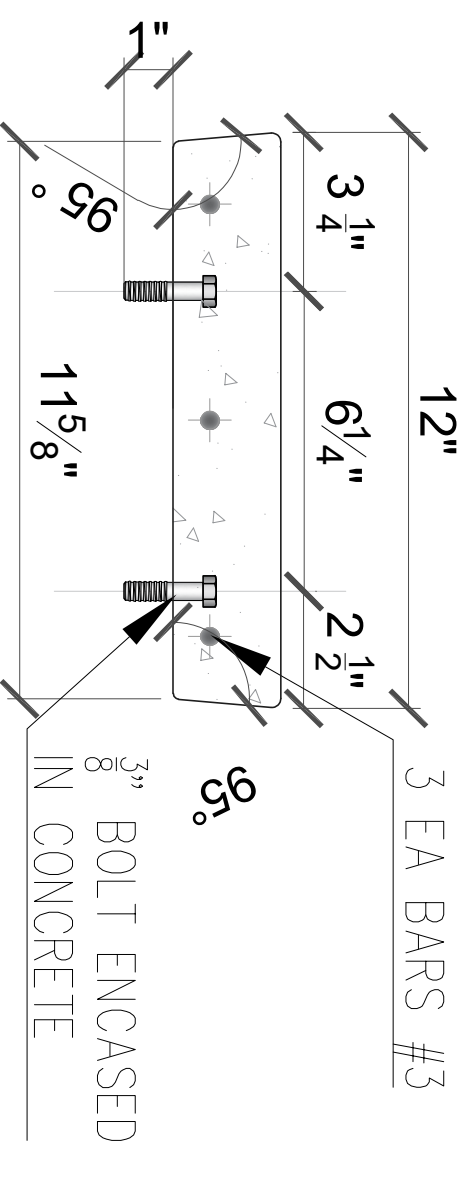


BOTTOM OF TREAD



TYPICAL FRONT VIEW OF TREAD

CASTMASTER PRECAST CONCRETE
42"X12"X2-1/4" W/ 3/8" BOLTS TREAD-BROOM FINISH
PRODUCT CODE: 42BF4



STANDAR TREAD SECTION

ALL DIMENSIONS ARE NOMINAL

CASTMASTER PRECAST CONCRETE

www.ConcreteTreads.net
info@FabMFG.net
901-286-1174

CUSTOMER:

QTY OF ORDERED: DATE ORDERED:

ORDERED BY: SIGNATURE:

DRAWN BY: UNITS
JM/MC IN

5000 PSI CONCRETE
THIS DRAWING AND ITS REPRODUCTIONS ARE THE PROPERTY OF FABRICATION MANUFACTURING AND MAY NOT BE REPRODUCED IN ANY WAY WITHOUT THE WRITTEN PERMISSION OF FABRICATION MANUFACTURING, LLC.